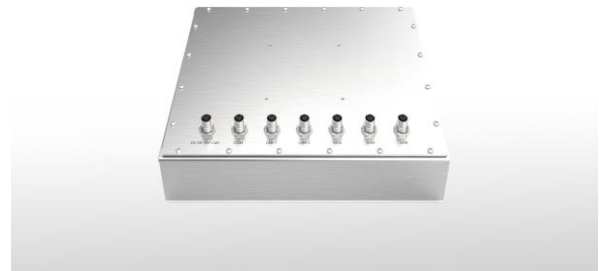


SPC-1250T

12.1" Waterproof IP65 Stainless Steel Panel PC



Features

- ⦿ 12.1" XGA support 1024 x 768 pixels
- ⦿ Intel® Pentium®/Celeron® Braswell SoC Processor
- ⦿ 5 Wire resistive touch screen
- ⦿ IP65 (Waterproof I/O with M12 connector)
- ⦿ VESA Mount

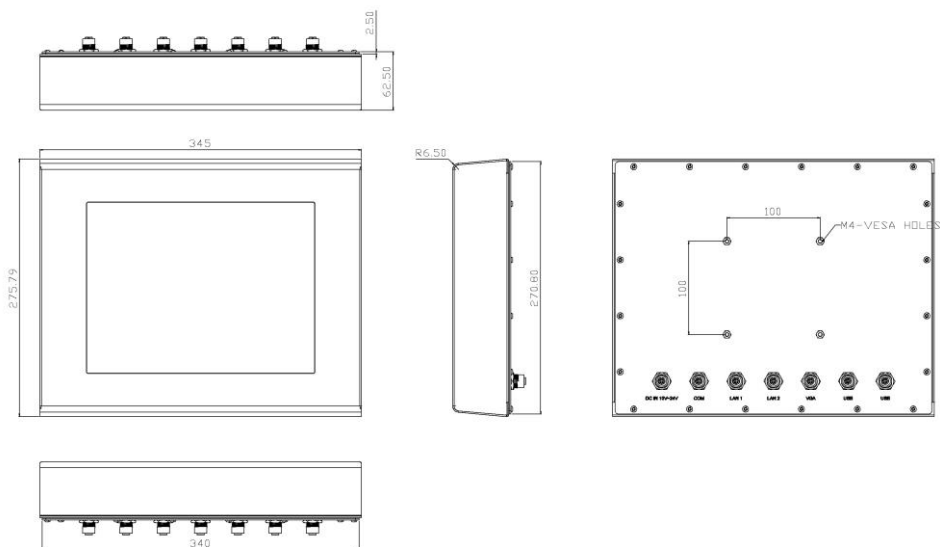
Introduction

The SPC-1250T panel pc computer is an all-in-one and compact system designed around a highly integrated Intel® Graphics Media Accelerator (GMA) chipset motherboard computer which is equipped with a 12.1-inch TFT LCD display. Features an embedded Intel® Core Haswell processor CPU, it offers a compact design for limited space environments to meet the demanding performance requirements of business and industrial applications including factory / warehouse / home automation, Digital Signage, kiosk, network communication and information terminal.

Specifications

| | | |
|----------------|------------------------|---|
| Display | Display Type | 12.1" XGA TFT LCD |
| | Resolution | 1024 x 768 pixels |
| | Luminance / Brightness | 350 cd/m ² (w/o Touch), Optional 1200 cd/m ² |
| | Backlight MTBF | LED Backlight, 30,000 hrs |
| | Touch Screen Type | 5 Wire Resistive Touch Screen with USB Interface |
| Main System | System Board | 3.5" Form Factor, Dimension: 146 x 102 mm |
| | CPU | Intel® Pentium®/Celeron® Braswell SoC N3150/N3160 Quad core processor |
| | Chipset | Intel® Gen8 Graphics DX11, OGL3.2 |
| | Memory Slots | Single channel DDR3L 1333/1600 MHz SO-DIMM, Support up to 8 GB of system memory |
| | Onboard Graphic | Integrated graphic |
| | Audio | High Definition Audio |
| | LAN | Integrated Dual Intel® i210 Gigabit Ethernet |
| Storage | Drive Bay | 1 x mSATA SSD bay |
| I/O Connectors | | 1 x VGA, 2 x LAN |
| | | 1 x COM |
| | | 2 x USB 2.0 port |
| Expansion | | 1 x Mini PCI-Express socket |
| Power Supply | | 12V~24V DC |
| Dimension | | 345mm x 275.79mm x 62.5mm |
| Environment | | Storage Temperature: -20 ~ 60 °C |
| | | Operating Temperature: 0 ~ 50 °C |
| | | Relative Humidity: 10%~95%, non-condensing |

Dimensions Drawing



Optional Accessories

| | |
|-----------|-------------------|
| SATA SSD | 32GB, 64GB, 128GB |
| DDR3L RAM | 2GB, 4GB, 8GB |

Optional OS Installation

Windows Embedded Standard 7 Runtime(WES7)

Ordering Information

| | |
|-----------|--|
| SPC-1250T | 12.1" Waterproof IP65 Stainless Steel Panel PC |
|-----------|--|

Note: All specifications and photos are subject to change without prior notice.